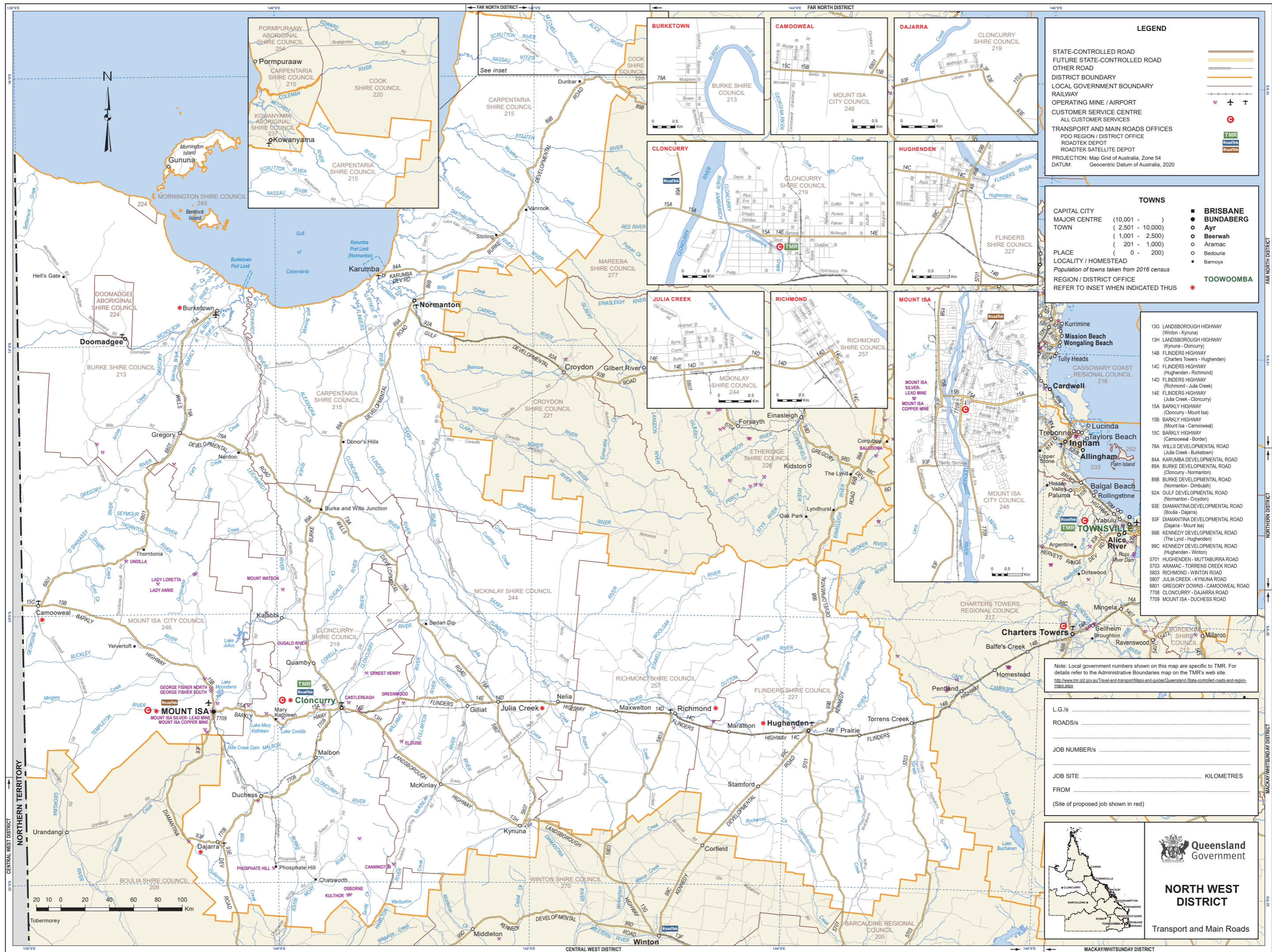


© The State of Queensland, 2022. © Precise Software Pty Ltd, 2022. © OR Limited, 2022. Based on [Dataset] - Street Pro [v] provided with the permission of Precise Software Pty Ltd (Current as at 03/22). [Dataset] - Rail, Centre Line, May 2021 provided with the permission of OR Limited and other state government databases.
 Disclaimer: While every care is taken to ensure the accuracy of this data, Precise Software Pty Ltd and/or the State of Queensland make no representations or warranties about its accuracy, reliability, completeness or suitability for any particular purpose and disclaims all responsibility and liability (including without limitation, liability in negligence) for all expenses, losses, damages (including indirect or consequential damage) and costs which may (incur as a result of the data being inaccurate or incomplete in any way and for any reason.



LEGEND

- STATE-CONTROLLED ROAD
- FUTURE STATE-CONTROLLED ROAD
- OTHER ROAD
- DISTRICT BOUNDARY
- LOCAL GOVERNMENT BOUNDARY
- RAILWAY
- OPERATING MINE / AIRPORT
- CUSTOMER SERVICE CENTRE
ALL CUSTOMER SERVICES
- TRANSPORT AND MAIN ROADS OFFICES
PDO REGION / DISTRICT OFFICE
- ROADTEK DEPOT
- ROADTEK SATELLITE DEPOT
- PROJECTION: Map Grid of Australia, Zone 54
- DATUM: Geocentric Datum of Australia, 2020

TOWNS

CAPITAL CITY	(10,001 -)	●	BRISBANE
MAJOR CENTRE	(2,501 - 10,000)	●	BUNDABERG
TOWN	(1,001 - 2,500)	○	Ayr
	(201 - 1,000)	○	Berwah
	(0 - 200)	○	Aramac
PLACE		○	Bedourie
LOCALITY / HOMESTEAD		○	Barmya
Population of towns taken from 2016 census			
REGION / DISTRICT OFFICE		*	TOOWOOMBA
REFER TO INSET WHEN INDICATED THUS			

- 13G LANDSBOROUGH HIGHWAY (Winton - Kynuna)
- 13H LANDSBOROUGH HIGHWAY (Kynuna - Cloncurry)
- 14B FLINDERS HIGHWAY (Charters Towers - Hughenden)
- 14C FLINDERS HIGHWAY (Hughenden - Richmond)
- 14D FLINDERS HIGHWAY (Richmond - Julia Creek)
- 14E FLINDERS HIGHWAY (Julia Creek - Cloncurry)
- 15A BARKLY HIGHWAY (Cloncurry - Mount Isa)
- 15B BARKLY HIGHWAY (Mount Isa - Camooweal)
- 15C BARKLY HIGHWAY (Camooweal - Border)
- 78A WILLS DEVELOPMENTAL ROAD (Julia Creek - Burkettown)
- 84A KARUMBA DEVELOPMENTAL ROAD (Cloncurry - Normanton)
- 89A BURKE DEVELOPMENTAL ROAD (Cloncurry - Normanton)
- 89B BURKE DEVELOPMENTAL ROAD (Normanton - Dimbulbin)
- 92A GULF DEVELOPMENTAL ROAD (Normanton - Croydon)
- 93E DIAMANTINA DEVELOPMENTAL ROAD (Boulia - Dajarra)
- 93F DIAMANTINA DEVELOPMENTAL ROAD (Dajarra - Mount Isa)
- 99B KENNEDY DEVELOPMENTAL ROAD (The Lynd - Hughenden)
- 99C KENNEDY DEVELOPMENTAL ROAD (Hughenden - Winton)
- 5701 HUGHENDEN - MUTTABURRA ROAD
- 5703 ARAMAC - TORRENS CREEK ROAD
- 5803 RICHMOND - WINTON ROAD
- 5807 JULIA CREEK - KYNUNA ROAD
- 6801 GREGORY DOWNS - CAMOOWEAL ROAD
- 7708 CLONCURRY - DAJARRA ROAD
- 7709 MOUNT ISA - DUCHESS ROAD

Note: Local government numbers shown on this map are specific to TMR. For details refer to the Administrative Boundaries map on the TMR's web site <http://www.tmr.qld.gov.au/Travel-and-transport/Maps-and-guides/Queensland-State-controlled-roads-and-region-maps.aspx>

L.G./s

ROADS/s

JOB NUMBER/s

JOB SITE

FROM

(Site of proposed job shown in red)

..... KILOMETRES

NORTH WEST DISTRICT

Transport and Main Roads

