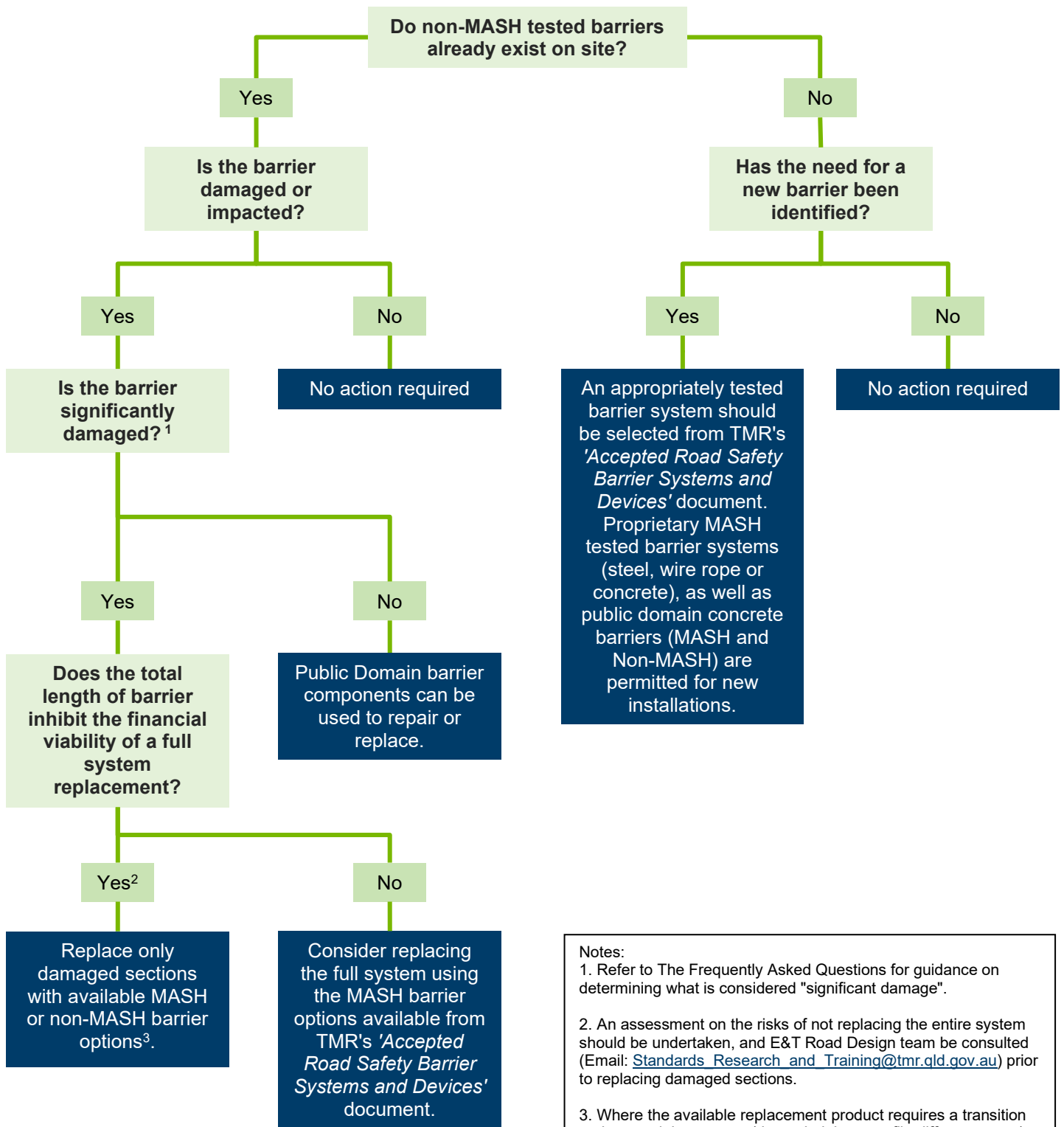


Decision tree - adoption of MASH road safety barrier systems and devices



Notes:

1. Refer to The Frequently Asked Questions for guidance on determining what is considered "significant damage".
2. An assessment on the risks of not replacing the entire system should be undertaken, and E&T Road Design team be consulted (Email: Standards_Research_and_Training@tmr.qld.gov.au) prior to replacing damaged sections.
3. Where the available replacement product requires a transition to the remaining system (due to height or profile differences etc), consult with supplier for connection details.